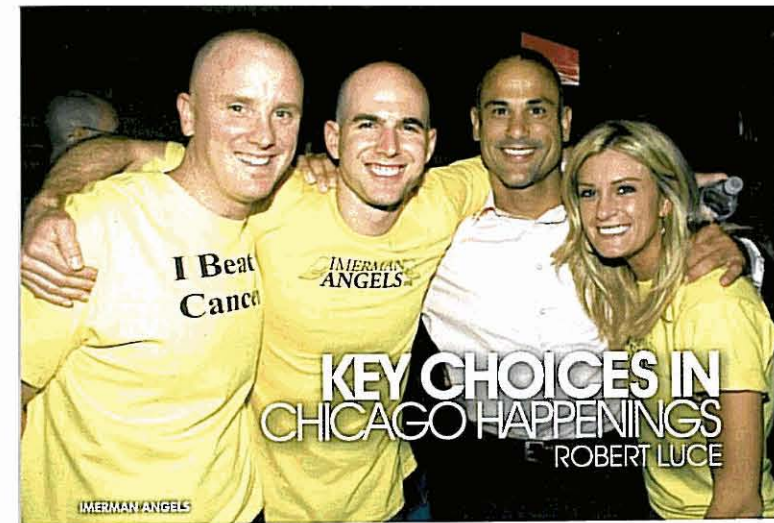


NEW YEAR'S EVE PARTIES
NAUGHTY AND NICE DINING
HOLIDAY COCKTAILS
WORLD OF CHOCOLATE 2008
AND MUCH MORE...

december 08 chicago-scene.com

Chicago Scene

ENTERTAINMENT scene



Imerman Angels will be hosting their 3rd Annual Toy Drive Happy Hour Event on Friday, December 5 from 6 pm to 10 pm at Le Passage (937 N. Rush, 312.255.0022). Price includes an open bar, appetizers and a live DJ. Tickets are \$30 pre-sale or \$40, if available, at the door. Ten dollars of each ticket goes directly toward purchasing Children's Memorial Hospital a mobile Wii

Fun Center, which is specifically designed for hospitals so that children of all ages can enjoy entertaining respite during difficult hospital stays. Imerman Angels provides one-on-one cancer support service that partners a person fighting cancer with someone who's beaten the same type of cancer. One-on-one relationships give a fighter the chance to ask personal questions and get support from someone

ENTERTAINMENT scene

The Juvenile Diabetes Research Foundation Illinois (JDRF Illinois) will host the 29th Annual Chance of a Lifetime Gala on Saturday, December 13 from 5:30 pm to 11:30 pm at the McCormick Place Lakeside Ballroom and the Arie Crown Theater (2301 S. Lake Shore) providing JDRF Illinois supporters with an amazing evening filled with dinner, dancing, auctions and a live performance by Steve Winwood. Emceed by NBC5 anchor Allison Rosati, the Gala allows attendees to play a direct role in funding cutting-edge diabetes research. Through a silent auction, a live auction and



Fund-A-Cure, the Gala has become JDRF Illinois' second highest earning fund-raising event. The Chance of a Lifetime Gala features an extensive auction of over 300 travel and luxury items. Individual Gala tickets are \$375 and include a reserved seat for dinner and show, complimentary drink tickets, participation in the silent and live auctions, and the opportunity to take part in the Fund-A-Cure program. To preview auction items or to purchase tickets or tables for the event, please visit the JDRF Illinois website at Jdrfillinois.org.

Sip to the holiday season as the recently renovated Palmer House Hilton (17 E. Monroe, 312.917.3404) invites you to Afternoon Tea from 2pm to 4pm daily throughout December. Timed perfectly for a holiday theater visit to The Nutcracker, guests can enjoy a table-side assortment of scones with Devonshire cream, lemon curd and strawberry preserves; assorted finger sandwiches, pastries and flavored teas. The cost for an afternoon sophisticatedly sipping tea in the lobby of the storied 19th century landmark is \$35 per person, or \$45 per person with champagne. After enjoying your

ENTERTAINMENT scene



cup of tea, sample upscale, contemporary American cuisine at Lockwood Restaurant or raise a glass to classic sophistication with a retro-inspired cocktail at Potter's Lounge located on the lobby level floor. For more information visit Chicago-hilton.com.

Characterized by thunderous sound and stunning, stylized choreography, Taiko Legacy is a distinctive fusion of traditional and contemporary approaches. On Saturday, December 13 at 7:30 pm and Sunday, December 14 at 3 pm at The Museum of Contemporary Art (220 E. Chicago, 312.280.2660) presents Taiko Legacy 5—a showcase of

international talent, including Chicago's leading taiko ensemble and master musicians from Japan and San Francisco. In addition, Japanese classical dance master Fujima Shunjo performs traditional kimono dance, featuring artful movement and elaborate costumes. With a 2,000-year-old history, taiko has its roots in Japanese court, theater, religious ceremonies and festivals. In the mid-20th century, the kumi-daiko style evolved, which featured ensembles made up solely of drums. Tickets are \$15. For more information visit Mcchicago.org.

The Chicago Sinfonietta, led by guest conductor Chelsea Tipton II, with special guest soprano Elizabeth Norman, returns to the Harris Theater (205 E. Randolph, 312.334.7777) on Monday, December 22 at 7:30 pm for their Holiday Celebration Concert. Share the spirit of the season with traditional holiday favorites, including Custer's Carol of the Bells, Coleridge Taylor's A Christmas Overture, O Holy Night and a carol sing-along to get into the holiday spirit. Other traditional songs included in the program are Han-